

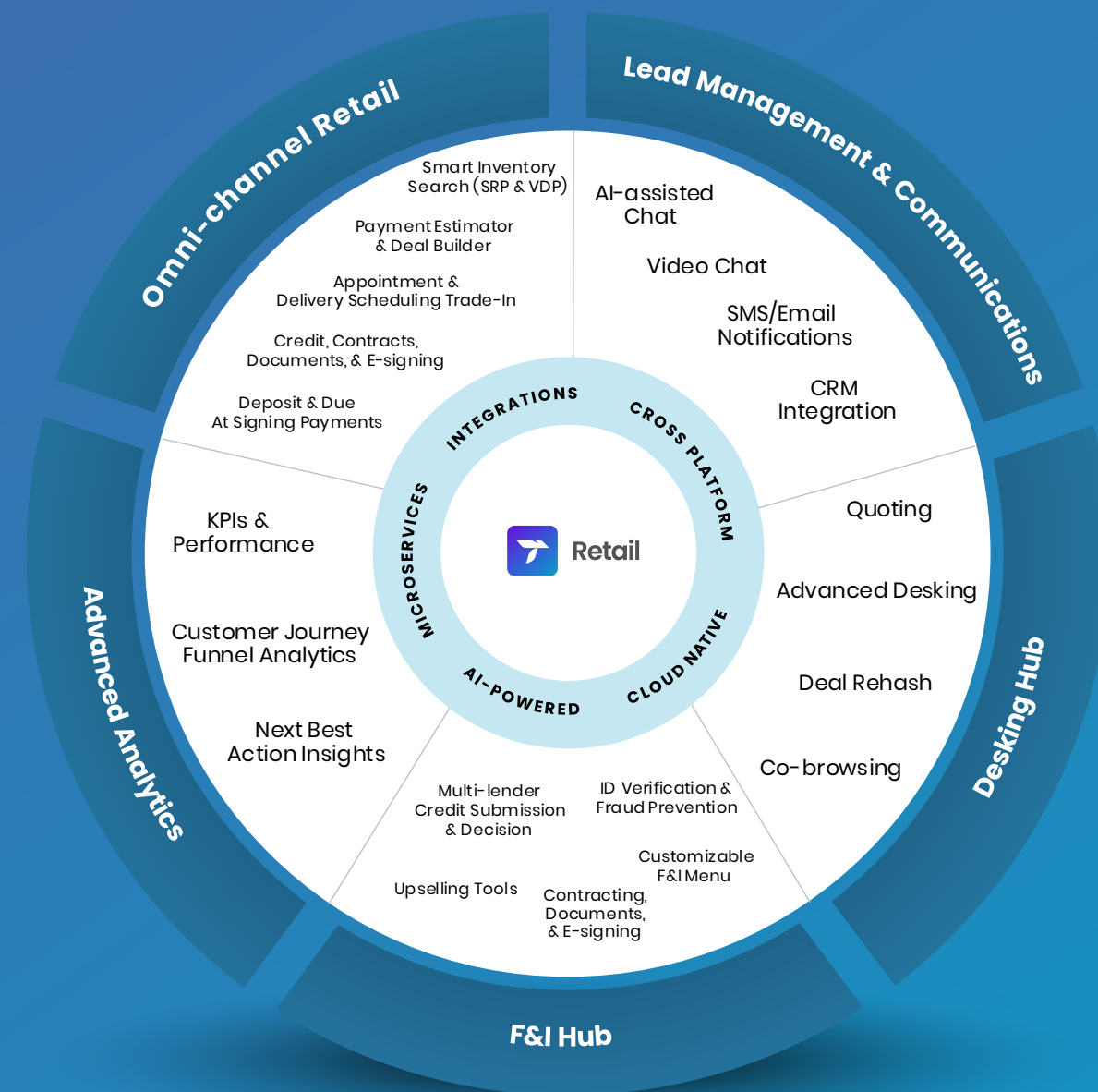
# Transcend Retail

Powered by NETSOL

Is a lack of omni-channel integration leading to missed sales and inconsistent customer experiences?

NETSOL's omni-channel retail solution, formerly known as Otoz, is designed to tackle these challenges head-on. Our tools streamline the F&I process, enhance customer journey tracking, and provide advanced analytics for real-time decision-making and higher lead conversions.

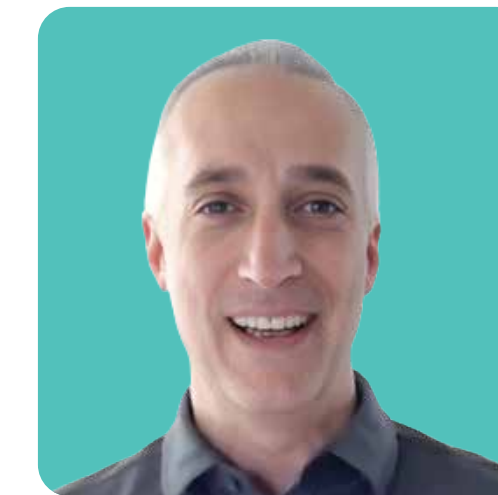
It's time to revolutionize your dealership's sales performance and exceed customer expectations.



## Why Transcend Retail?

Activate a digital sales funnel with deals that close in minutes.

-  **Futureproof Technology**
-  **Omni-channel Experience**
-  **Higher F&I Profits**
-  **Dealer Empowerment**
-  **Simplified Inventory Management**
-  **Higher Lead Conversions**
-  **Enhanced Customer Trust**
-  **AI-driven Optimization**
-  **Frictionless Purchase Experience**



Just around the time of COVID, MINI decided it was time to create an end-to-end purchasing and finance journey for the consumer. It was important to create something more than a lead generator to facilitate the complete transaction for any MINI customer, any place, any time. The usual suspects in the market could not offer that except for NETSOL.

**Mike Peyton, Chief Motorer & Vice-President of MINI of the Americas.**

# Transcend Finance

Powered by NETSOL

Are your finance and leasing operations struggling to keep up with rising customer expectations, regulatory demands, and the fast-paced nature of today's market?

Transcend Finance is an industry-leading, enterprise-grade finance and leasing platform designed to deliver transformative outcomes for financial institutions, auto captives, and commercial lenders, including some of the world's most recognized blue-chip companies.



## Why Transcend Finance?

Transform your finance and leasing operations with an enterprise-grade platform trusted by industry leaders to drive measurable success.


 **Flexible, Service-based Architecture**

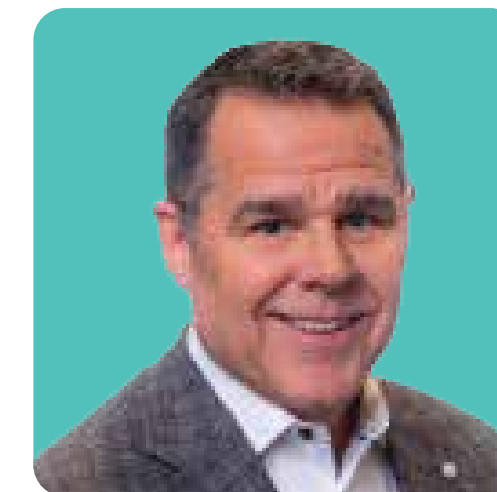
 **Improved Customer Experience**

 **Seamless Management of Complex Credit Portfolios**

 **Accelerate Deal Velocity**

 **Futureproof Servicing Operations**

 **Transform Dealer Funding with Enterprise Efficiency**



SCI Lease Corp has recognized the success that NETSOL has had in other markets and we believe their platforms are in line with SCI Lease Corp's commitment to bring transformative technology and services to the leasing marketplace. Working with NETSOL going forward will enhance our lease management processes, allowing us to better meet our customers' expectations and provide additional bandwidth to expand our automotive OEM business.



**Alan H. Bird, President and Chief Executive Leader of SCI Lease Corp.**

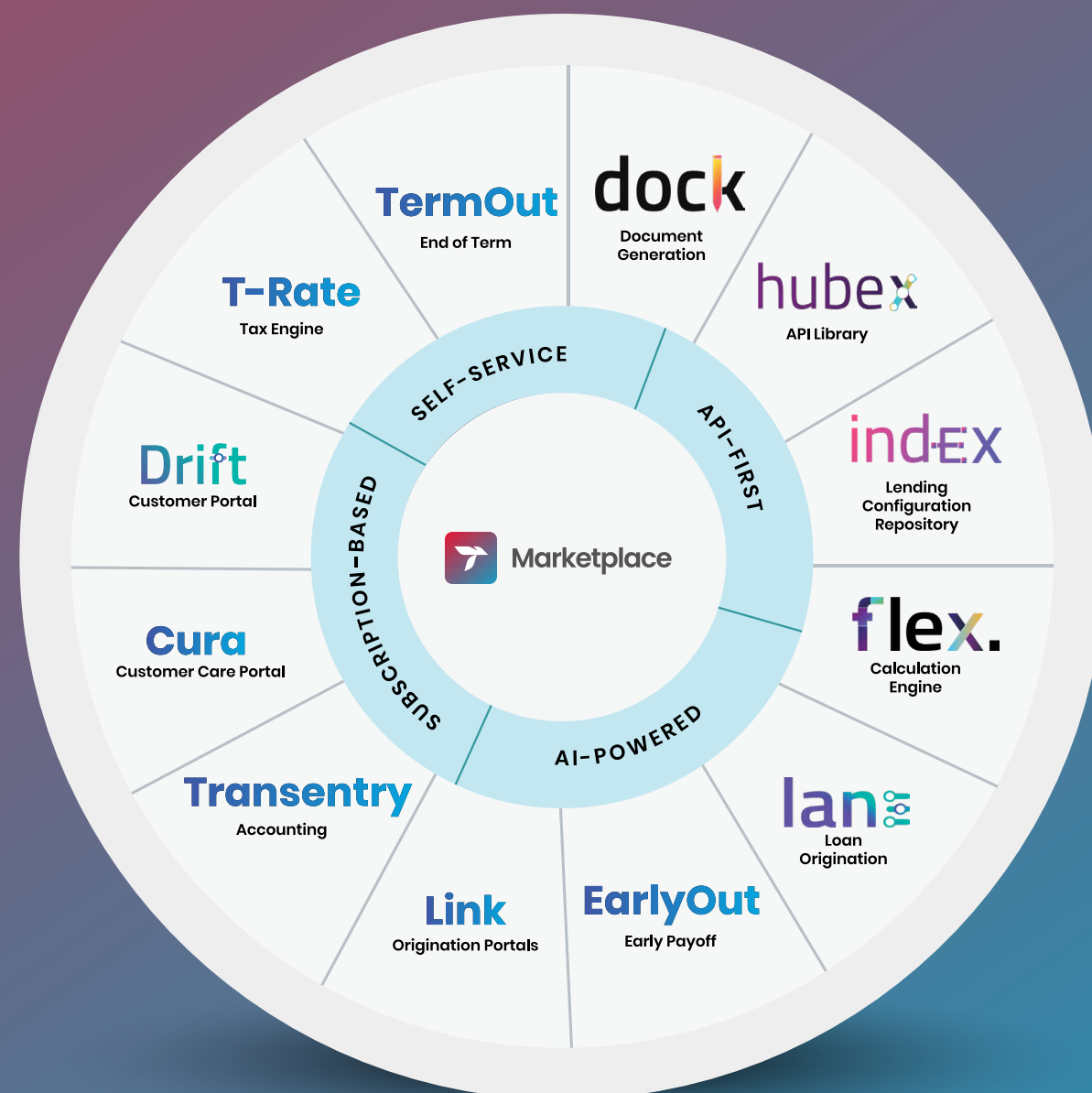
# Transcend Marketplace

Powered by NETSOL

Are your legacy systems limiting your ability to adapt and grow in a competitive market? Or is your business weighed down by outdated systems that aren't built for the future?

Transcend Marketplace offers a unified, component-based architecture designed for the modern finance and leasing industry.

With Transcend Marketplace, you can streamline loan originations, contract servicing, and empower your teams with tools designed for efficiency and growth in an ever-evolving market.



## Why Transcend Marketplace?

Unlock the power of end-to-end finance and leasing components engineered to accelerate growth.

 **Modular Architecture**

 **Built-in Loan Management**

 **Flexible Contract Servicing**

 **Seamless Integrations**

 **Futureproof Scalability**

 **AI-powered Insights**



**Mike Boyes, Head of Vendor at Haydock Finance.**

NETSOL is a highly regarded IT provider in the United Kingdom and globally. By opting for (the company's calculation engine) Flex, our vendor customers can assess quotations quickly whilst customer facing and via desktop or mobile. This software also meant less reliance on our customers having to call the team to provide quotations over the phone. We were really impressed with the simple onboarding process and implementation was super quick as we had Flex integrated into our website within a couple of days.

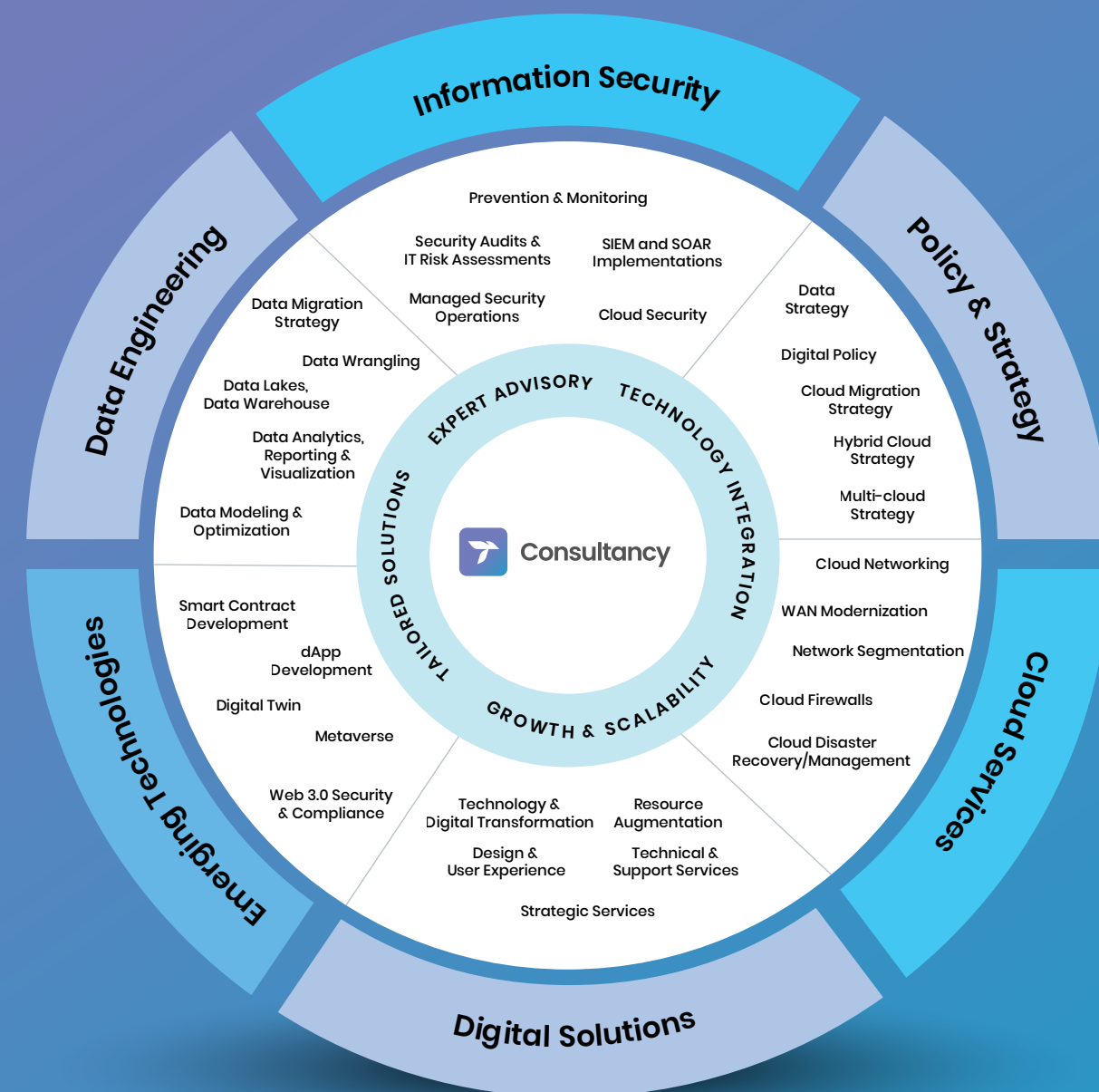
# Transcend Consultancy

Powered by NETSOL

Is your organization facing challenges in adopting secure cloud solutions, harnessing AI for competitive advantage, or navigating complex regulatory landscapes?

Transcend Consultancy offers holistic IT services tailored to your unique needs, helping you navigate complexities, adopt best practices, and achieve sustainable growth.

With years of industry expertise, Transcend Consultancy provides IT services, offering deep insights and practical solutions that help organizations across industries modernize IT infrastructure, streamline technology operations, adopt secure cloud solutions, and futureproof their businesses.



## Why Transcend Consultancy?

Leverage our expert consulting services to modernize IT, ensure compliance, optimize processes, and futureproof your business for sustainable growth.

### IT Infrastructure Modernization

Modernize your IT infrastructure with secure cloud solutions and emerging technologies, reducing costs and improving operational efficiency.

### Compliance Expertise

Leverage our deep expertise in compliance and regulations to stay ahead of evolving requirements, minimize risks, and protect your business effectively.

### Information Security

Safeguard your critical data with advanced security solutions tailored to protect against evolving threats and ensure regulatory compliance.

### Cloud Services

Achieve scalable, cost-efficient operations with secure multi-cloud solutions that boost agility.

### Data Engineering & Generative AI

Build scalable data pipelines for real-time insights and use generative AI to automate content creation, simulate scenarios, and enhance predictive accuracy.

### Futureproof Advisory Services

Adapt to new market trends with advisory services that secure your long-term success.

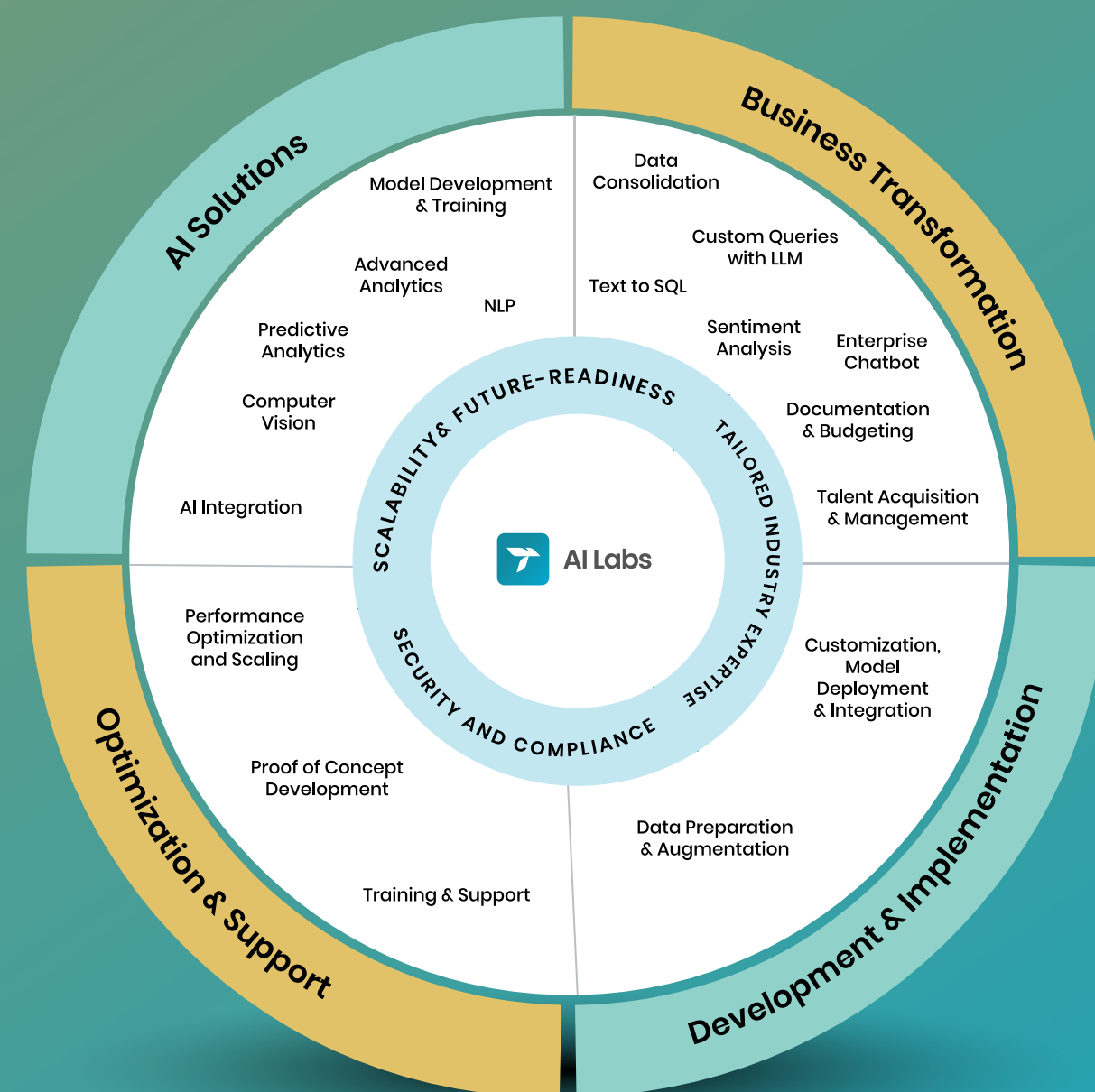
# Transcend AI Labs

Powered by NETSOL

Are you ready to harness the full potential of AI to drive your business forward?

Transcend AI Labs offers advanced AI services designed to help organizations innovate, automate, and solve complex challenges using cutting-edge technology. From AI model development to custom implementations, we bring AI-driven transformation to every aspect of your business.

With extensive expertise in artificial intelligence and machine learning, Transcend AI Labs helps companies across industries leverage data to make smarter decisions, automate key processes, and gain a competitive edge in the market.



## Why Transcend AI Labs?

Unlock new possibilities for your business with our AI-driven solutions that enhance efficiency, drive growth, and foster innovation.

### AI Model Development

Create customized AI models tailored to your business needs, enabling precise predictions and data-driven insights.

### Machine Learning Integration

Seamlessly integrate machine learning capabilities into your existing systems to enhance operational efficiency and decision-making.

### Generative AI Solutions

Automate creativity and personalize customer experiences with generative AI that transforms workflows and boosts innovation.

### Data Analytics & Insights

Turn vast amounts of data into actionable insights with AI-powered analytics, improving strategic decision-making.

### AI-powered Automation

Streamline repetitive tasks with AI-powered automation, reducing operational costs and allowing teams to focus on higher-value activities.

### Future-ready AI Advisory

Stay ahead of the curve with expert advisory services that ensure your AI strategy evolves alongside market trends and technological advancements.